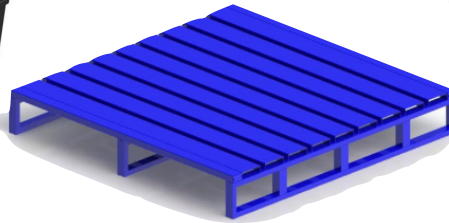




FIT-RIGHT
SINCE 1968



FIT-RIGHT
SINCE 1968

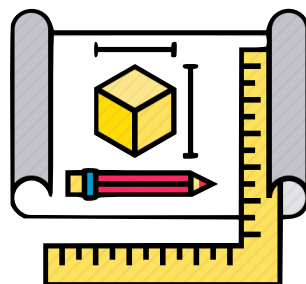


METAL PALLETS / CAGE BIN

Product Catalogue



CONSULT



DESIGN



EXECUTE



Manufacturer / Wholeseller/ Distributor

FIT-RIGHT makes your life organised and easy with its expertise in the field of racking and storage systems, our core focus is Developing and manufacturing quality components/ products used in storage systems and allied industries.

OUR CAPABILITIES :

MANUFACTURING :

- Best in class manufacturing technology deployment that includes Multiple Roll Forming lines to form various components .
- Automated Powder Coating line and Semi automated Welding Automation systems.
- We have one of the largest manufacturing capacity in India with high flexibility and capability to execute large projects and offer customised solutions as per the needs of the customers in domestics as well as international markets.
- We have the capability to powder coat single piece up to 12 meters in length, which is the best offer in this part of the world.

QUALITY ASSURANCE :

- The raw material used for the manufacturing is subjected to sample test as per plan to ensure that the same is as per requirement. This is over and above the test certificates, which are provided by the steel manufacturer.
- The steel used is certified for its chemical composition by respective chemical analysis and the mechanical properties like yield-strength by standard physical testing methods.
- The powder meant for finish is tested for its chemical and physical properties for every batch.
- The fasteners also undergo random sampling tests for its dimensions.
- We have well established in-process and final quality test methods to ensure that all the products manufactured as per Highest quality standards which is benchmarked with International offerings.
- These components, which are manufactured to exacting standards and are finished with superior finish are packed properly for road/rail worthy packing, and are carefully transported to avoid transit damages of the products and reach site in factory condition & good quality.

DESIGN EXCELLENCE:

- Our Design capability with global benchmarks provide efficient as well as customised solutions for all customer applications utilising advance technologies, knowledge base and understanding of industry applications.
- All our components are designed to the best quality standards conforming to the current Indian Standards and are also in line with the guidelines/standards enumerated in RMI and SEMA
- Our solutions are also tested through FEA for structural rigidity and safety thus producing designs, which are safe and efficient. Our design analysis and development activities are well supported by advanced software packages like, ANSYS, IDEAS, SOLID WORKS and AUTO-CAD .
- Continuous Product improvements and new product development utilising exclusive prototyping facilities and academic industry partnerships makes us a unique player in this field with an ability to cater to wider spectrum of industries and applications.



REACH & DISTRIBUTION:

The guiding principle at FIT-RIGHT is customer service and all our efforts are directed towards achieving highest standards of the same. Our products are backed by a very strong company sales and service establishments throughout the country as well as in strategic export markets.

FIT-RIGHT has been delivering storage racks, warehousing solutions and material handling solutions to various DEALERS/ MANUFACTURERS / TRADERS across India. We design, manufacture, deliver, provide after sales service and support for all the products delivered.

The map and the statistics below show the reach FIT-RIGHT has achieved in the respective states in the last 5 year and growing .





METAL PALLETS

From steel pallets to heavy-duty boxes, from drum pallets to mini containers we manufacture a wide range of Pallet storage solutions. Then, there's always a unique requirement of the customer and we are more than glad to meet it.

Our products are lightweight, low maintenance, durable, cost-effective and above all of consistent quality.

Quality - that's made possible through years of extensive research, trials, and tests. The forthcoming pages clearly describe our storage equipment's advantage over conventional type of equipment either from wood or plastic.

With over 5 decade-long engineering and fabrication experience at hand and a highly skilled and motivated team of professionals at the helm, we are confident to meet any of your material handling and storage requirements. Be it design concept or construction, sample produce or mass production. Expect the same quality that's the hallmark of every FIT-RIGHT product.

Since the complete range of pallets is from sheet metal, we can make pallets as per customer requirement also. We fabricate pallets from **MILD STEEL, STAINLESS STEEL & ALUMINIUM**. You can choose the type of metal best suitable for your plant environment.

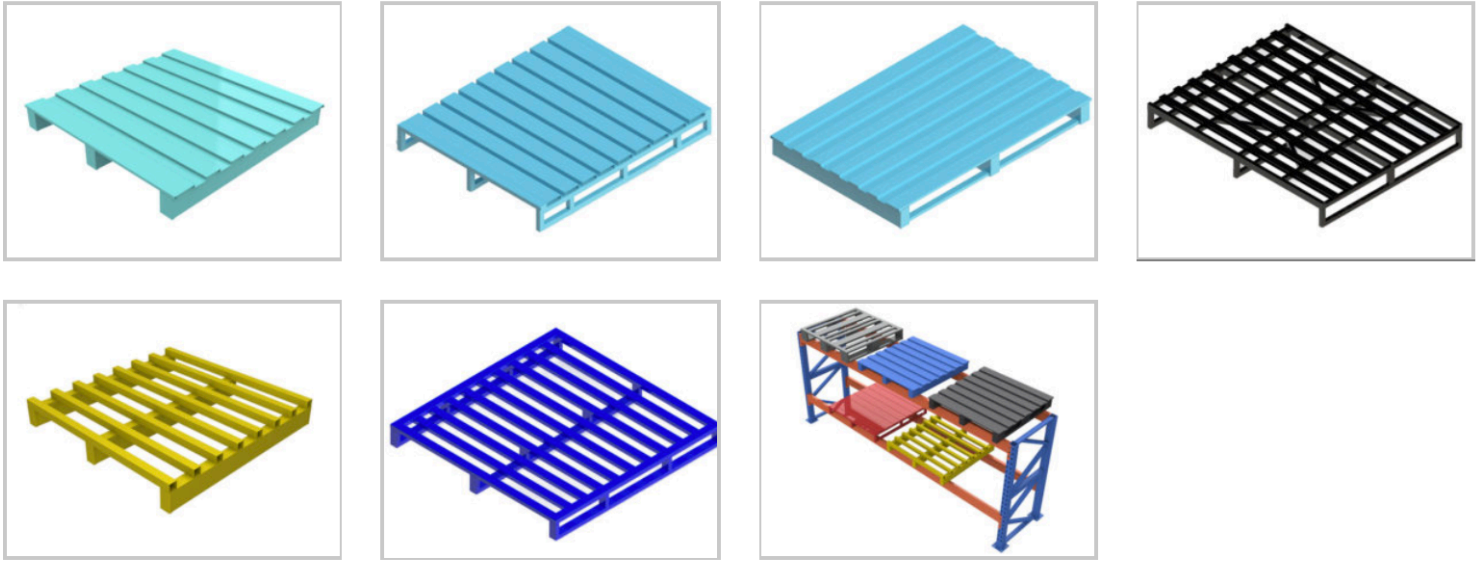
FIT-RIGHT has engineered STEEL PALLETS that have been revolutionising material handling industry. Pallets are manufactured with high strength corrugated sheets, formed from CRCA sheets. The corrugated design is the square type deep rib, which with its flat surface forms a half box section girder and is enormously strong. Its resists sagging and collapse even under heavy loads while keeping its weight below that of most other conventional pallets.

FIT-RIGHT pallets are designed to help keep manufacturing plants safe and clean. The lightweight of the pallets will eliminate injuries that occur due to the weight and awkward handling of wood pallets.

After the pallet has served its life it still pays you back in terms of scrap value. Disposing of the pallet had never been so easy.

KINDLY GO THROUGH THE VARIOUS TYPES OF AVAILABLE PALLETS WITH US .

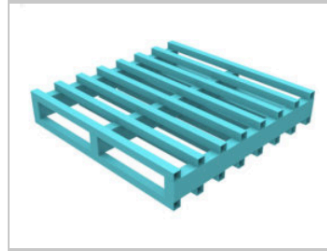
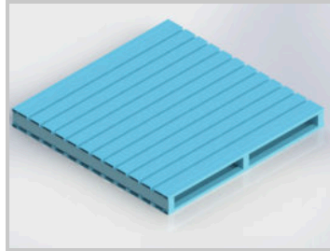
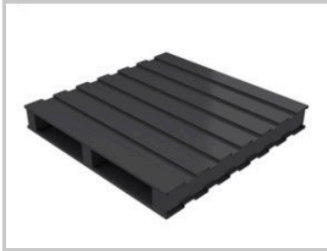
Single Deck



- Single Deck – Non Reversible Type.
- Two way / Four way entry for the forklift, stackers and Hand Pallet Trucks.
- Load carrying capacities from 500 kg to 3000 kg per pallet
- Compatible with all types of material handling equipment.
- Two way entry type pallets are preferred for use in heavy duty racking system.
- Any practical size can be made as per customer requirement.

| Model No | W | D | H2 WE / 4 WE | X |
|----------|------|------|--------------|-----|
| SDP-800 | 800 | 800 | 115 / 135 | 100 |
| SDP-8010 | 800 | 1000 | 115 / 135 | 100 |
| SDP-8012 | 800 | 1200 | 115 / 135 | 100 |
| SDP-1080 | 1000 | 800 | 115 / 135 | 100 |
| SDP-1010 | 1000 | 1000 | 115 / 135 | 100 |
| SDP-1012 | 1000 | 1200 | 115 / 135 | 100 |
| SDP-1280 | 1200 | 800 | 115 / 135 | 100 |
| SDP-1210 | 1200 | 1000 | 115 / 135 | 100 |
| SDP-1212 | 1200 | 1200 | 115 / 135 | 100 |

Double Deck



- Double Deck - Reversible Type.
- Two way / Four way entry for the forklift and stackers.
- Load carrying capacities from 500 kg to 4000 kg per pallet
Compatible with all types of material handling equipment.
- Two way entry type pallets are preferred for use in heavy duty racking system.
- For palletized product strong enough to hold its own weight the pallets can be stacked up to three high.
- They can also be used in all types of racking systems.
- The box type construction of the pallet makes it resistant to sagging and collapsing even under heavy loads.
- Any practical size can be made as per customer requirement.

| Model No | W | D | H2 WE / 4 WE | X |
|----------|------|------|--------------|-----|
| DDP-800 | 800 | 800 | 130 / 150 | 100 |
| DDP-8010 | 800 | 1000 | 130 / 150 | 100 |
| DDP-8012 | 800 | 1200 | 130 / 150 | 100 |
| DDP-1080 | 1000 | 800 | 130 / 150 | 100 |
| DDP-1010 | 1000 | 1000 | 130 / 150 | 100 |
| DDP-1012 | 1000 | 1200 | 130 / 150 | 100 |
| DDP-1280 | 1200 | 800 | 130 / 150 | 100 |
| DDP-1210 | 1200 | 1000 | 130 / 150 | 100 |
| DDP-1212 | 1200 | 1200 | 130 / 150 | 100 |

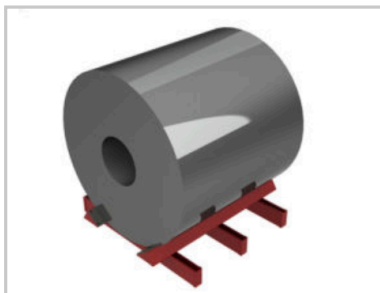
Packing Pallets



- Specially designed for packing purpose and export consignments
- Light weight, meant for one time use
- No fumigation or heat treatment required
- Available in different load carrying capacities
- Acceptable in all countries.
- Finish – Red Oxide

| Model No | W | D | H | X |
|----------|------|------|-----|-----|
| PP-1000 | 1000 | 1000 | 130 | 100 |
| PP-1012 | 1000 | 1200 | 130 | 100 |
| PP-1212 | 1200 | 1200 | 130 | 100 |
| PP-1210 | 1200 | 1000 | 130 | 100 |

Coil Pallet



- Specially designed for Storing / packing of Coils
- Designed for loads up to 5 tons
- Lined with rubber sheet to prevent damage to coils
- Light weight, meant for one time use
- Available in different load carrying capacities
- Size of pallet as per the dimension of the coil

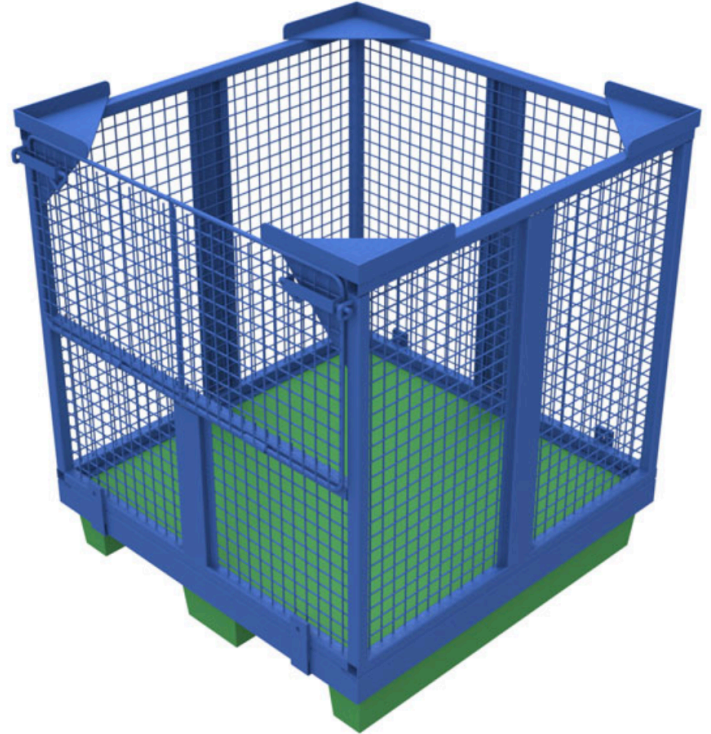
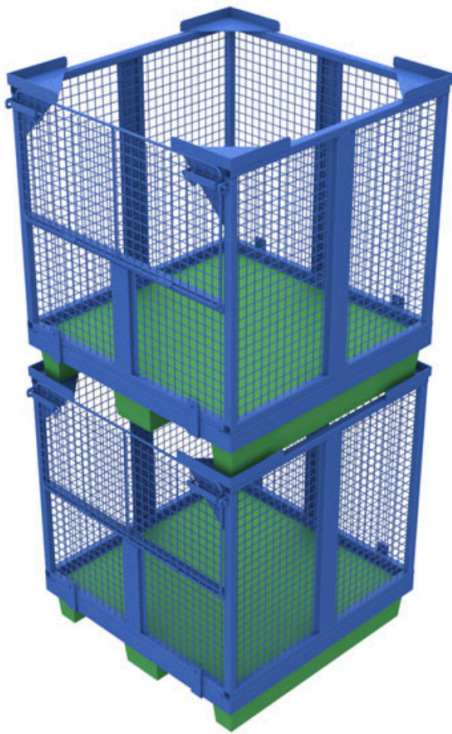
Cage Bin



- Cage bins are see-through type.
- The construction of the cage bin is using structural as well as rolled sections.
- Easy visual inspection of the stored products, as sides covered with wire mesh.
- Drop open door on one side, which allow easy access to the stored items even in the stacked condition.
- Four way entry for fork lift & hand pallet truck.
- Self-stackable up to Ground + 4 high.
- Different options of door available – 2 side half open-able door / Double door.
- Can be supplied with Castor wheels.

| Model No | W | D | H | X |
|----------|------|------|-----|-----|
| CB-800 | 800 | 800 | 600 | 100 |
| CB-8010 | 800 | 1000 | 600 | 100 |
| CB-8012 | 800 | 1200 | 600 | 100 |
| CB-1080 | 1000 | 800 | 600 | 100 |
| CB-1010 | 1000 | 1000 | 600 | 100 |
| CB-1012 | 1000 | 1200 | 600 | 100 |
| CB-1280 | 1200 | 800 | 600 | 100 |
| CB-1210 | 1200 | 1000 | 600 | 100 |
| CB-1212 | 1200 | 1200 | 600 | 100 |

Cage on Plastic Pallet



- These are fitted on to a Plastic Pallet • Cage bins are see thru type.
- Drop open door

| Model No | W | D | H | X |
|----------|------|------|-----|-----|
| CCP-800 | 800 | 800 | 800 | 100 |
| CCP-8010 | 800 | 1000 | 800 | 100 |
| CCP-8012 | 800 | 1200 | 800 | 100 |
| CCP-1080 | 1000 | 800 | 800 | 100 |
| CCP-1010 | 1000 | 1000 | 800 | 100 |
| CCP-1012 | 1000 | 1200 | 800 | 100 |
| CCP-1280 | 1200 | 800 | 800 | 100 |
| CCP-1210 | 1200 | 1000 | 800 | 100 |
| CCP-1212 | 1200 | 1200 | 800 | 100 |

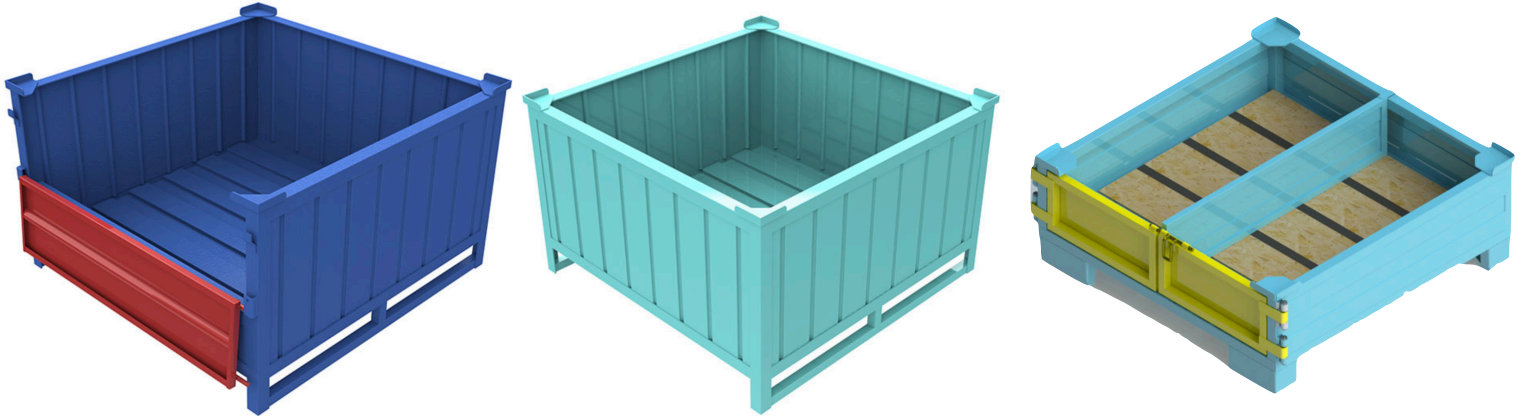
Collapsible Cage Bin



- Space saving fully collapsible cage pallet
- Removable half drop door on one side
- Stackable to 3 high when loaded
- Manufactured from mild steel angle or box section
- Available in standard and special sizes
- Can be fabricated with removable or hinged sides
- Standard construction suitable for 500kg or 1000kg uniformly distributed load

| Model No | W | D | H | | X |
|----------|------|------|--------|--------|-----|
| | | | Type 1 | Type 2 | |
| CCB-800 | 800 | 800 | 600 | 800 | 100 |
| CCB-8010 | 800 | 1000 | 600 | 800 | 100 |
| CCB-8012 | 800 | 1200 | 600 | 800 | 100 |
| CCB-1080 | 1000 | 800 | 600 | 800 | 100 |
| CCB-1010 | 1000 | 1000 | 600 | 800 | 100 |
| CCB-1012 | 1000 | 1200 | 600 | 800 | 100 |
| CCB-1280 | 1200 | 800 | 600 | 800 | 100 |
| CCB-1210 | 1200 | 1000 | 600 | 800 | 100 |
| CCB-1212 | 1200 | 1200 | 600 | 800 | 100 |

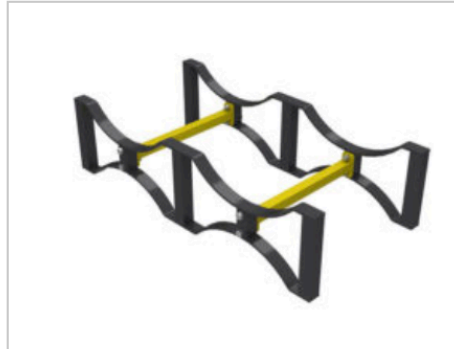
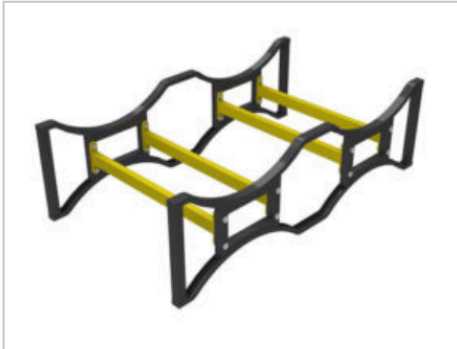
CORRUGATED STEEL BOXES



- Extra strong and rigid, longer equipment life, lower maintenance and repair
- Two / Four way entry type
- Self-stackable up to Ground + 4 high.
- Compatible with fork lift, hand pallet truck and stackers as well as automated systems.
- Offered in different models, and varying load bearing capacity.
- Can be manufactured in any practical size.
- Different combination of constructions – with one side door / 2 side doors/ without door.
- Can be offered with Wooden Base / Rubber Base.
- The box can be lined from inside with PP sheet so as to avoid damage to stored components.
- Can be offered in Hot Dip Galvanised finish for use in Cold Rooms.
- Can be provided with lugs for lifting with cranes.

| Model No | W | D | H | X |
|----------|------|------|-----|-----|
| CSB-800 | 800 | 800 | 600 | 100 |
| CSB-8010 | 800 | 1000 | 600 | 100 |
| CSB-8012 | 800 | 1200 | 600 | 100 |
| CSB-1080 | 1000 | 800 | 600 | 100 |
| CSB-1010 | 1000 | 1000 | 600 | 100 |
| CSB-1012 | 1000 | 1200 | 600 | 100 |
| CSB-1280 | 1200 | 800 | 600 | 100 |
| CSB-1210 | 1200 | 1000 | 600 | 100 |
| CSB-1212 | 1200 | 1200 | 600 | 100 |

STEEL DRUM STANDS / PALLETS



- Designed to store two drums per pallet in horizontal condition.
- Stackable up to Ground + 4 high.
- Dimension : 1280 mm W x 720 mm D x 370 mm H
- Provides the quickest, safest & easiest method of moving and handling loaded steel drums.
- Can be moved individually or by the stack with a forklift truck.
- Construction of Drum Pallets are from MS pressed channels / rolled sections / Formed sections
- Horizontal Drum Pallets are shipped in knockdown condition.
- Made in standard size only for standard steel drums of 210 ltr / 20ltr capacity.



- Designed to store four drums per pallet in Vertical condition.
- Stackable up to Ground + 3 high.
- Provides the quickest, safest & easiest method of moving and handling loaded steel drums.
- Can be moved individually or by the stack with a forklift truck.
- Accessibility from all four sides.
- Construction of Drum Pallets are from MS pressed channels / rolled sections / Formed sections.
- Horizontal Drum Pallets are shipped in knockdown condition.
- Made in standard size only for standard steel drums of 200 ltr / 20ltr capacity.



BELOW GIVEN ARE A FEW OF OUR CUSTOMERS



and many more...



CONTACT US

FIT-RIGHT STORAGE SYSTEMS

**H.O. - 209-A , C-WING , 2ND FLOOR GOKUL IND.ESATE , SAGBAUG ,
MAROL CO-OP IND AREA , ANDHERI EAST , MUMBAI - 400059**

**WAREHOUSE - C/O- TANAY LOGISTICS SERVICES, BHUMI WORLD BLDG
NO C-10 GALA NO 7, PIMPLAS VILLAGE, MUMBAI NASHIK HIGHWAY ,
NEAR KALYAN NAKA PIMPLAS, BHIWANDI 421302**



+91-22-28598478 / 28564269



+91-9820589554



fitrightindia@gmail.com



+91-9820589554



www.fitright.in